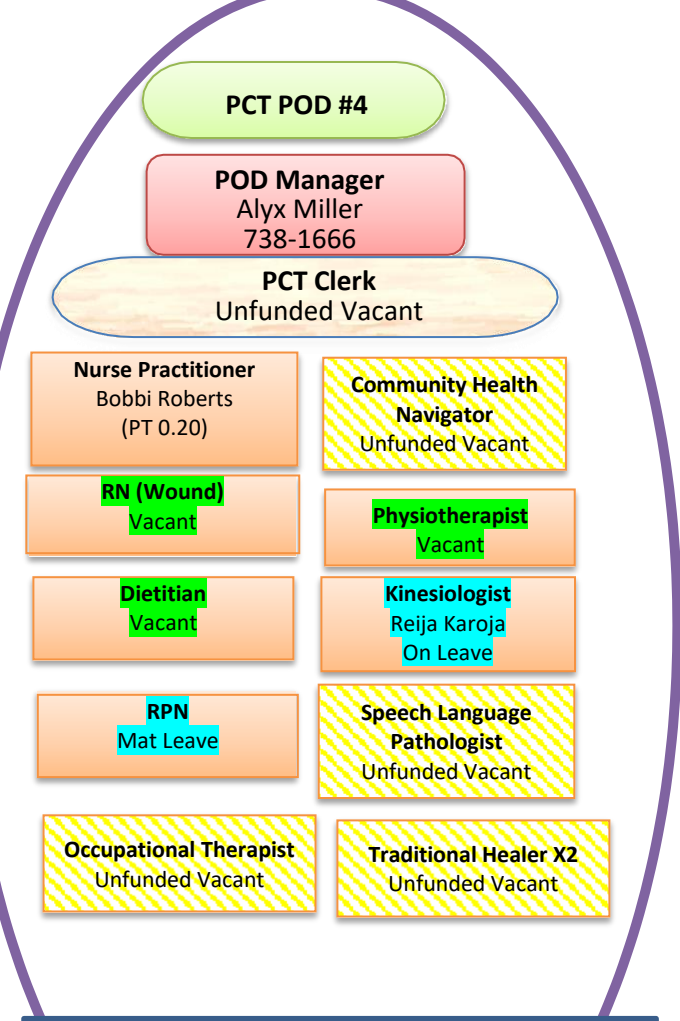
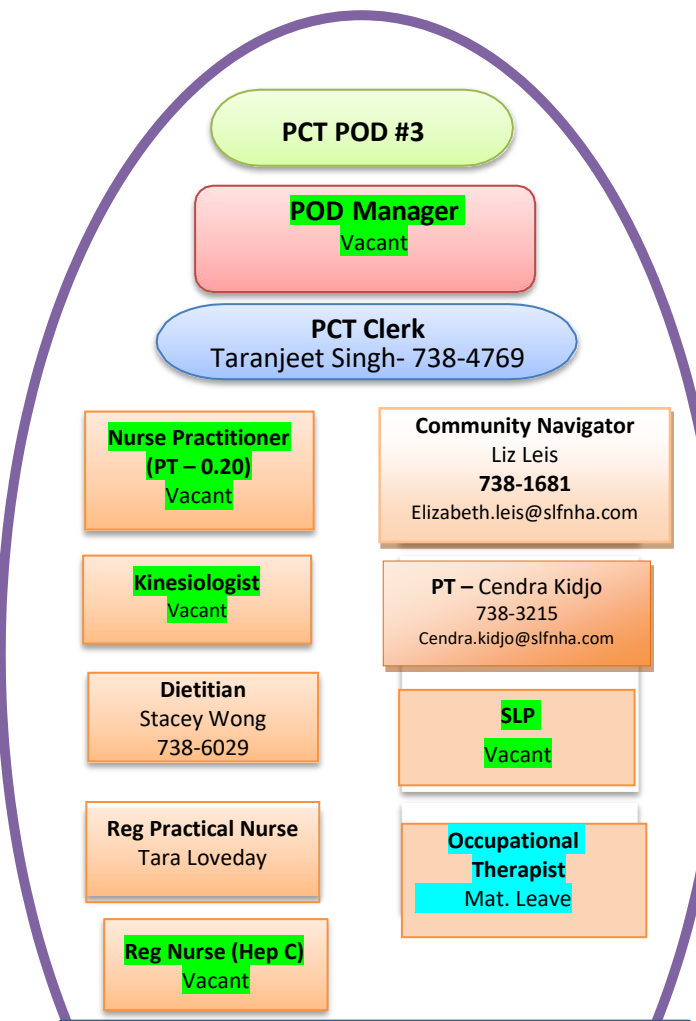
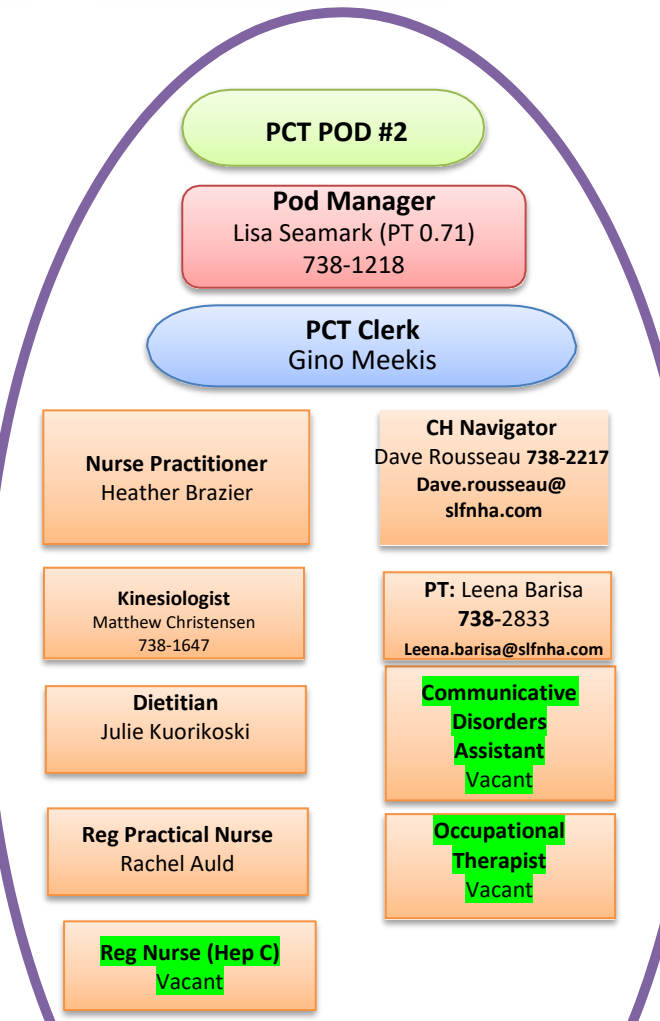
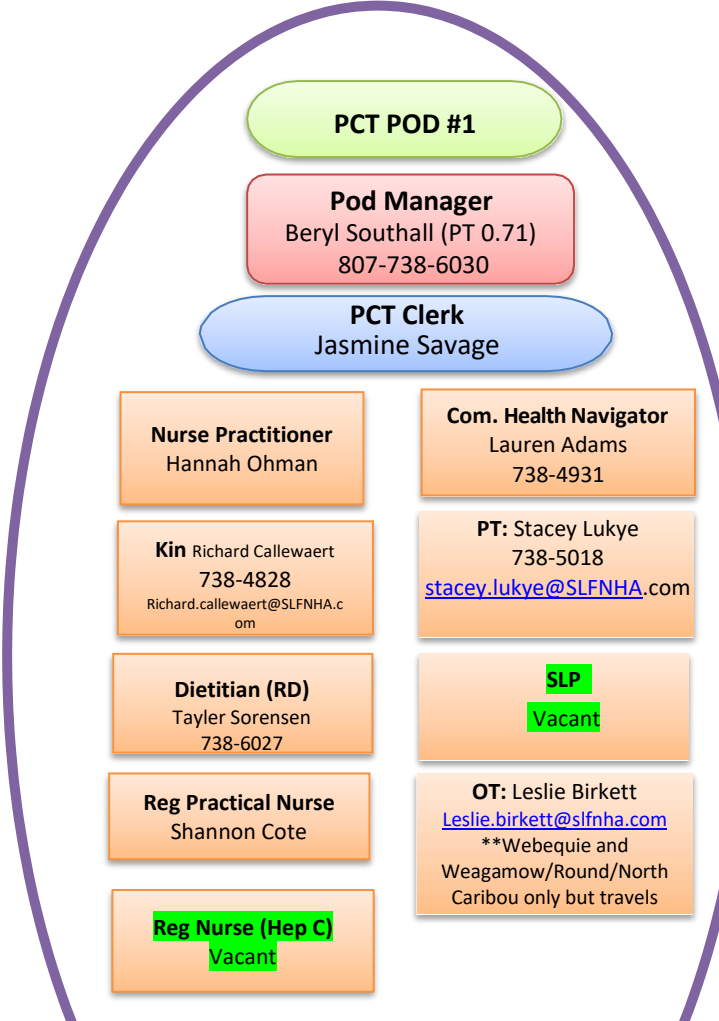




Primary Care Team
Organization Chart
April 2024

33 Sioux Lookout Area Communities



Communities Served
Cat Lake, Deer Lake, Fort Severn, Kasabonika Lake, Sioux Lookout, Kingfisher Lake, Poplar Hill, Wunnumin Lake, Weagamow (North Caribou, Round Lake), Saugeen, Marten Falls, Koocheching, Wabauskang

Communities Served
Keewaywin, Mishkeegogamang (Osnaburgh), North Spirit Lake, Pikangikum, Slate Falls, Sandy Lake, Sioux Lookout, Muskrat Dam, Neskantaga (Landsdowne), Aroland, Wawakapewin (Long Dog), Pickle Lake

Communities Served
Bearskin, Eabametoong (Fort Hope), Kitchenuhmaykoosib Inninuwug (Big Trout Lake), Nibinamik (Summer Beaver), Sachigo Lake, Lac Seul (Obishikokaang), Sioux Lookout, Webequie, Wapekeka Eagle Lake, McDowell Lake, Wabigoon Lake

RPN/RD Communities
Fort Severn, Round Lake (Weagamow, North Caribou Lake), North Spirit Lake, Keewaywin, Webequie, Eabametoong (Fort Hope), Sioux Lookout